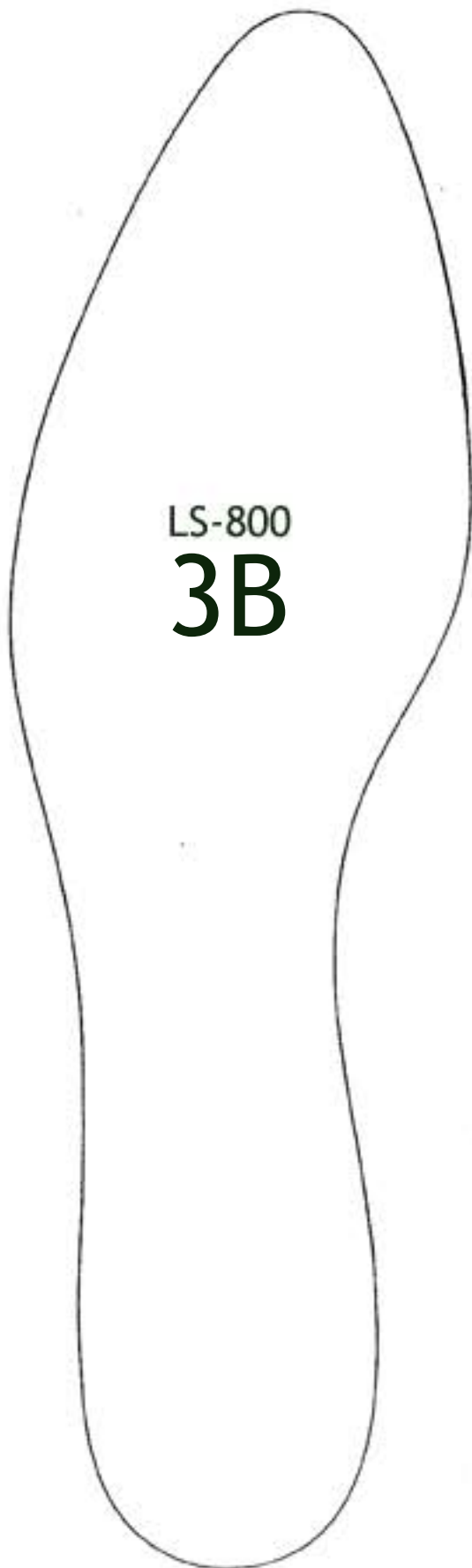


10"



LS-800  
**3B**

***Very Important!!***

*Be sure to measure  
the 10" gauge next  
to the last outline  
to verify the proper  
scale. It must be 10"*

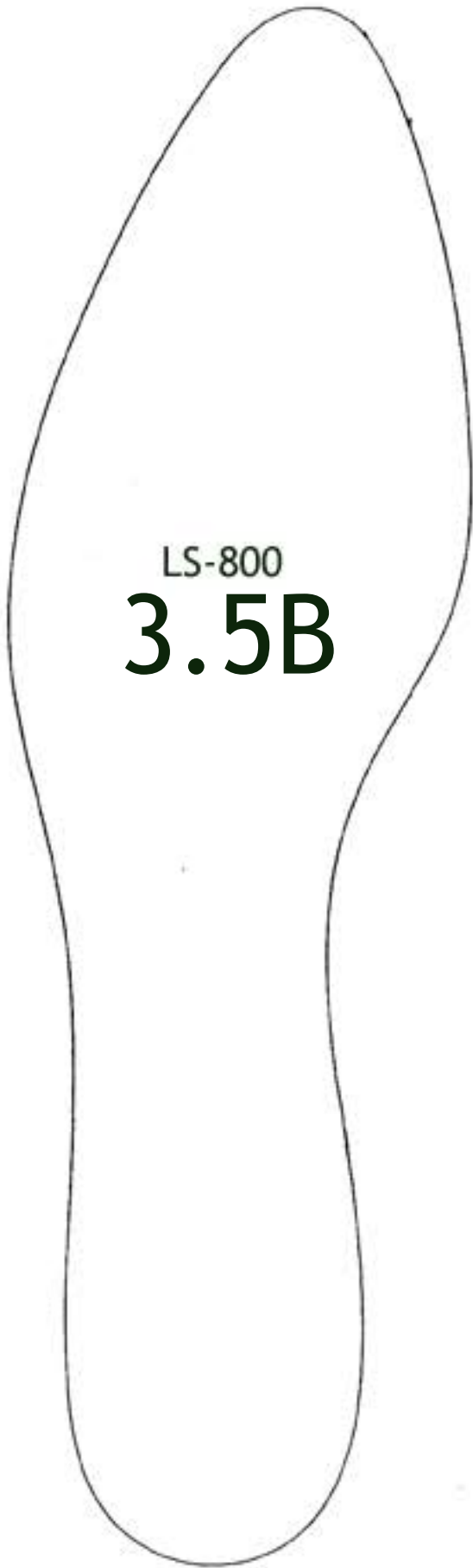
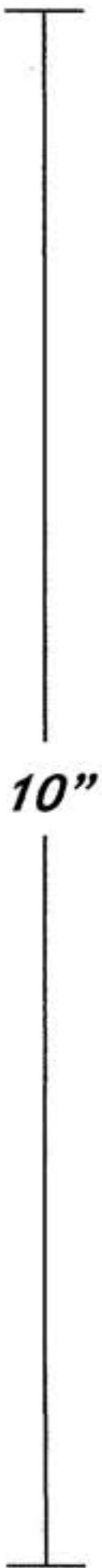
**Volume Measurements**

***Ball: 7 1/4"***

***Waist: 6 7/8"***

***H. Instep: 8 1/4"***

Sorrell Notions & Findings  
[www.sorrellnotionsandfindings.com](http://www.sorrellnotionsandfindings.com)  
217 E. Oklahoma Ave.  
Guthrie, OK 73044  
405-282-5464



***Very Important!!***

*Be sure to measure  
the 10" gauge next  
to the last outline  
to verify the proper  
scale. It must be 10"*

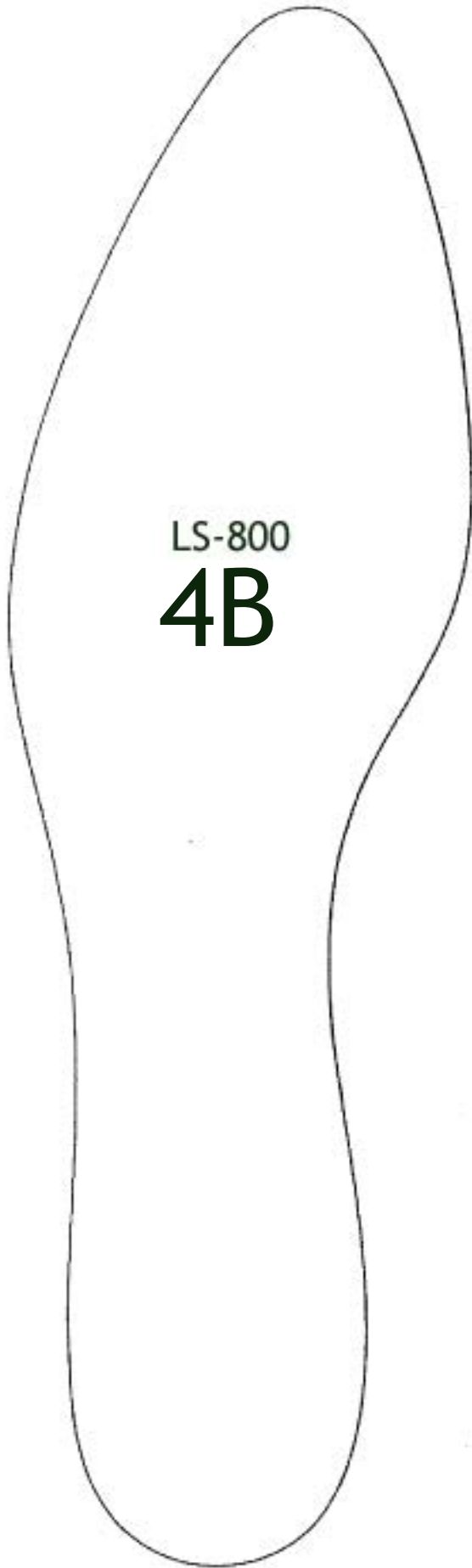
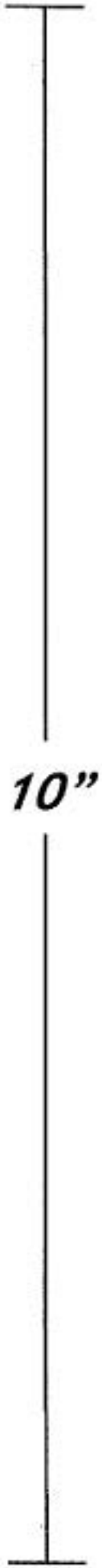
**Volume Measurements**

***Ball: 7 3/8"***

***Waist: 7"***

***H. Instep: 8 3/8"***

Sorrell Notions & Findings  
[www.sorrellnotionsandfindings.com](http://www.sorrellnotionsandfindings.com)  
217 E. Oklahoma Ave.  
Guthrie, OK 73044  
405-282-5464



LS-800  
**4B**

***Very Important!!***

*Be sure to measure  
the 10" gauge next  
to the last outline  
to verify the proper  
scale. It must be 10"*

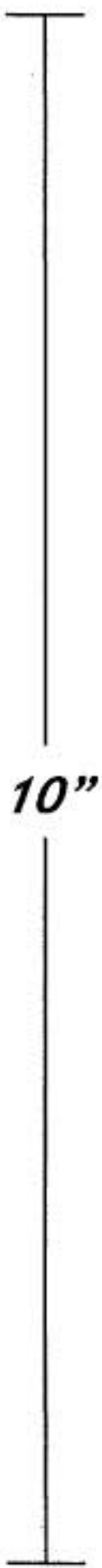
**Volume Measurements**

***Ball: 7 1/2"***

***Waist: 7 1/8"***

***H. Instep: 8 1/2"***

Sorrell Notions & Findings  
[www.sorrellnotionsandfindings.com](http://www.sorrellnotionsandfindings.com)  
217 E. Oklahoma Ave.  
Guthrie, OK 73044  
405-282-5464



10"



LS-800  
**4.5B**

***Very Important!!***

*Be sure to measure  
the 10" gauge next  
to the last outline  
to verify the proper  
scale. It must be 10"*

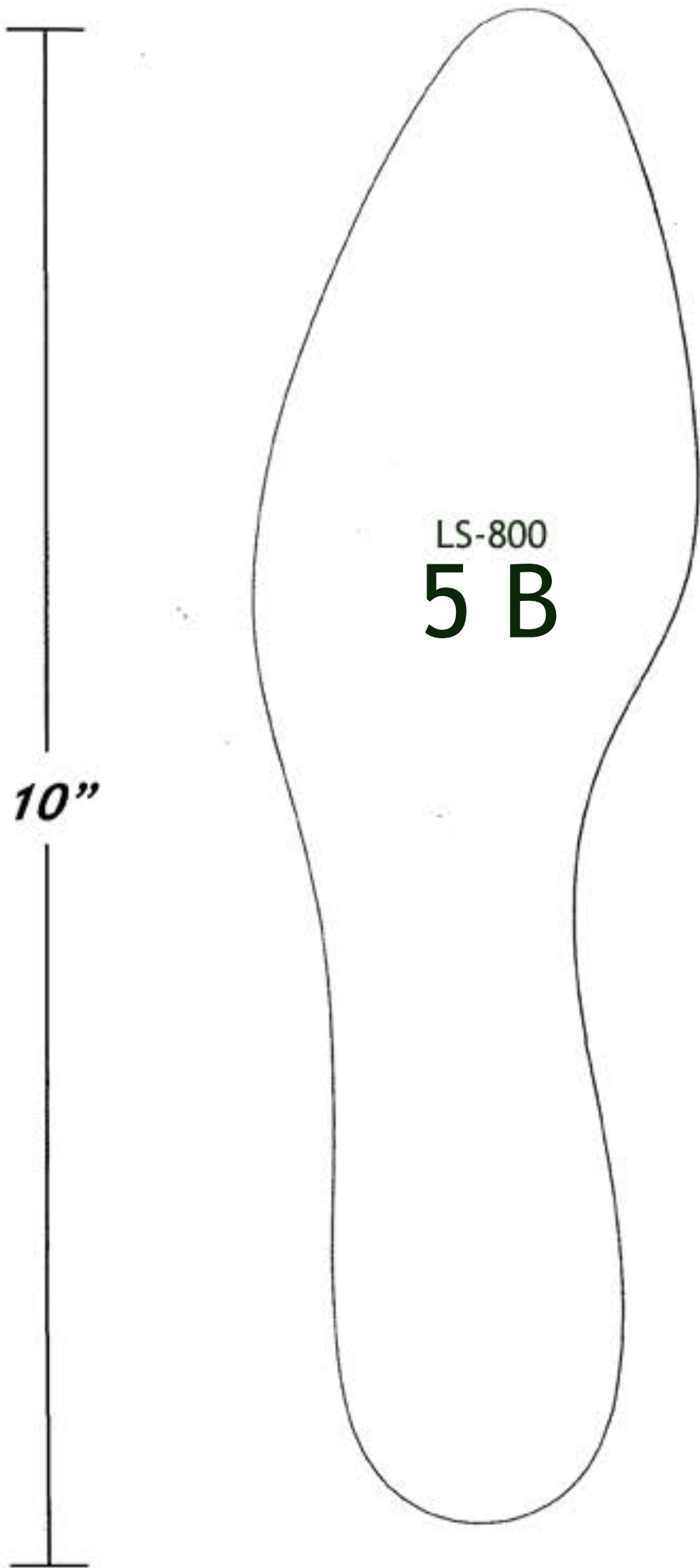
**Volume Measurements**

***Ball: 7 5/8"***

***Waist: 7 1/4"***

***H. Instep: 8 5/8"***

Sorrell Notions & Findings  
[www.sorrellnotionsandfindings.com](http://www.sorrellnotionsandfindings.com)  
217 E. Oklahoma Ave.  
Guthrie, OK 73044  
405-282-5464



***Very Important!!***  
*Be sure to measure  
the 10" gauge next  
to the last outline  
to verify the proper  
scale. It must be 10"*

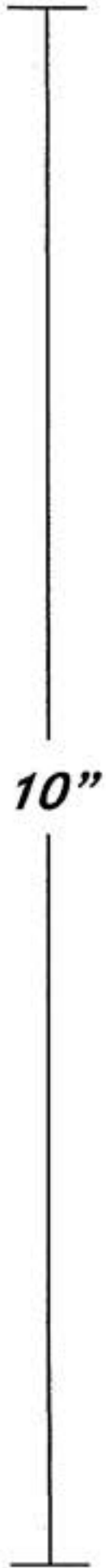
**Volume Measurements**

***Ball: 7 3/4"***

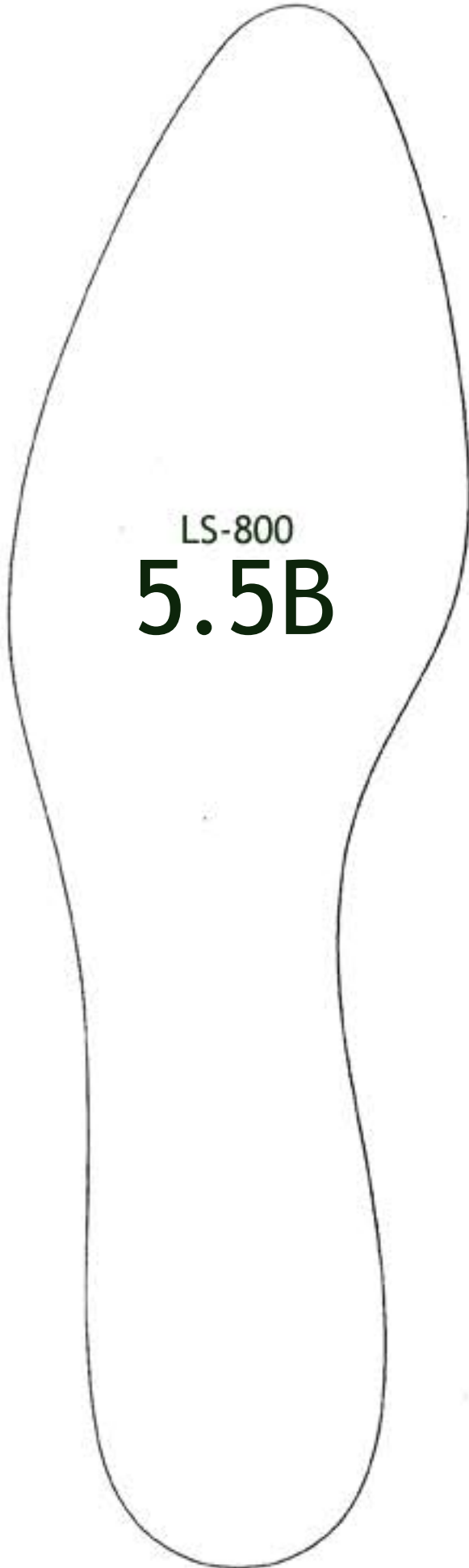
***Waist: 7 3/8"***

***H. Instep: 8 3/4"***

Sorrell Notions & Findings  
[www.sorrellnotionsandfindings.com](http://www.sorrellnotionsandfindings.com)  
217 E. Oklahoma Ave.  
Guthrie, OK 73044  
405-282-5464



10"



LS-800  
**5.5B**

***Very Important!!***

*Be sure to measure  
the 10" gauge next  
to the last outline  
to verify the proper  
scale. It must be 10"*

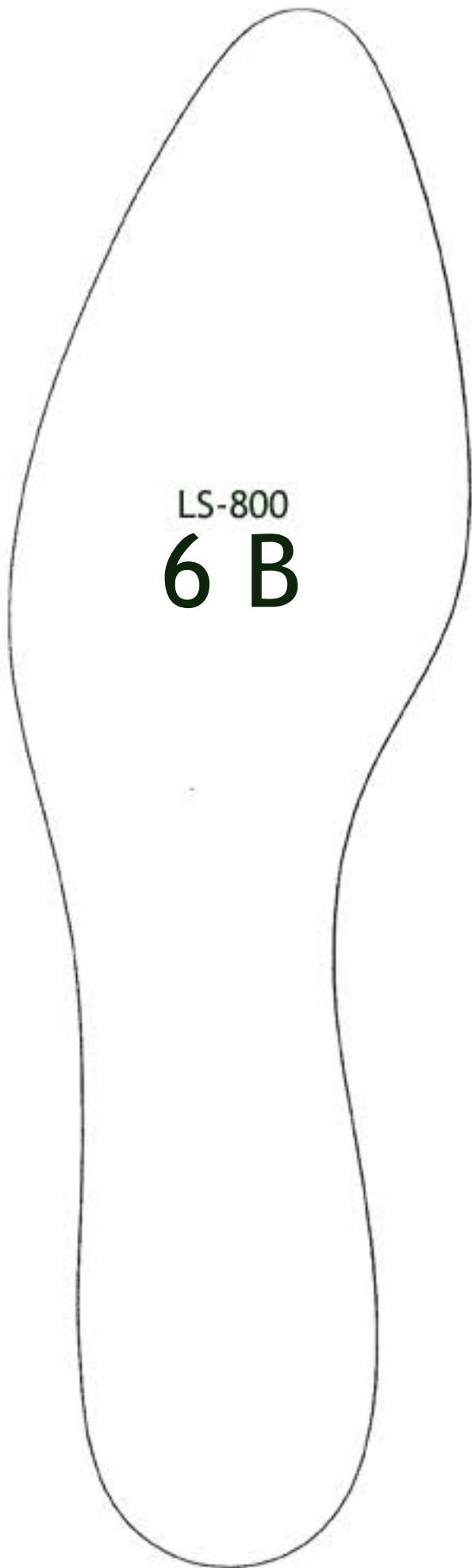
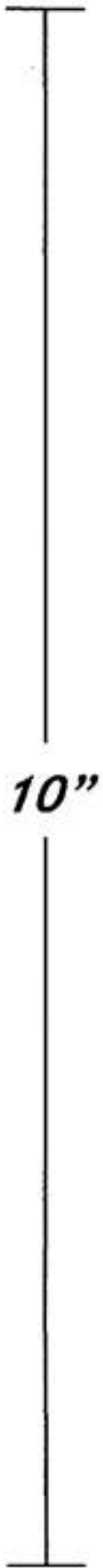
**Volume Measurements**

***Ball: 7 7/8"***

***Waist: 7 1/2"***

***H. Instep: 8 7/8"***

Sorrell Notions & Findings  
[www.sorrellnotionsandfindings.com](http://www.sorrellnotionsandfindings.com)  
217 E. Oklahoma Ave.  
Guthrie, OK 73044  
405-282-5464



***Very Important!!***

*Be sure to measure  
the 10" gauge next  
to the last outline  
to verify the proper  
scale. It must be 10"*

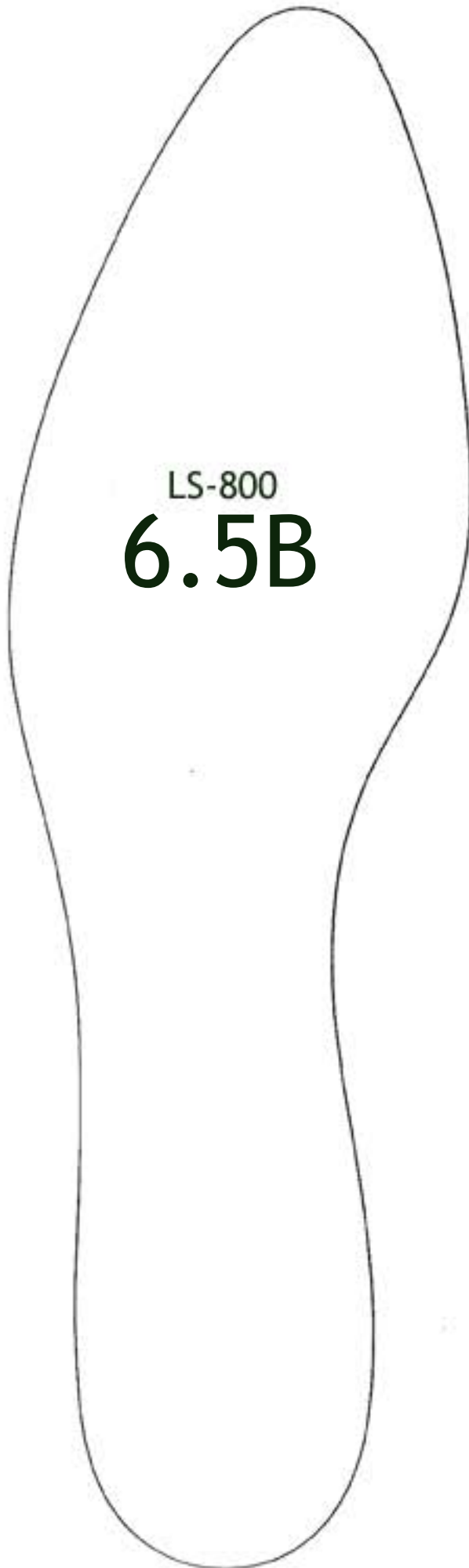
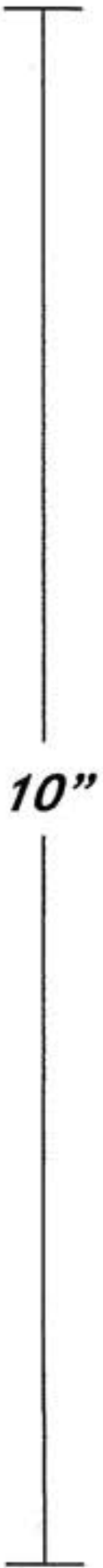
**Volume Measurements**

***Ball: 8"***

***Waist: 7 5/8"***

***H. Instep: 9"***

Sorrell Notions & Findings  
[www.sorrellnotionsandfindings.com](http://www.sorrellnotionsandfindings.com)  
217 E. Oklahoma Ave.  
Guthrie, OK 73044  
405-282-5464



***Very Important!!***

*Be sure to measure  
the 10" gauge next  
to the last outline  
to verify the proper  
scale. It must be 10"*

**Volume Measurements**

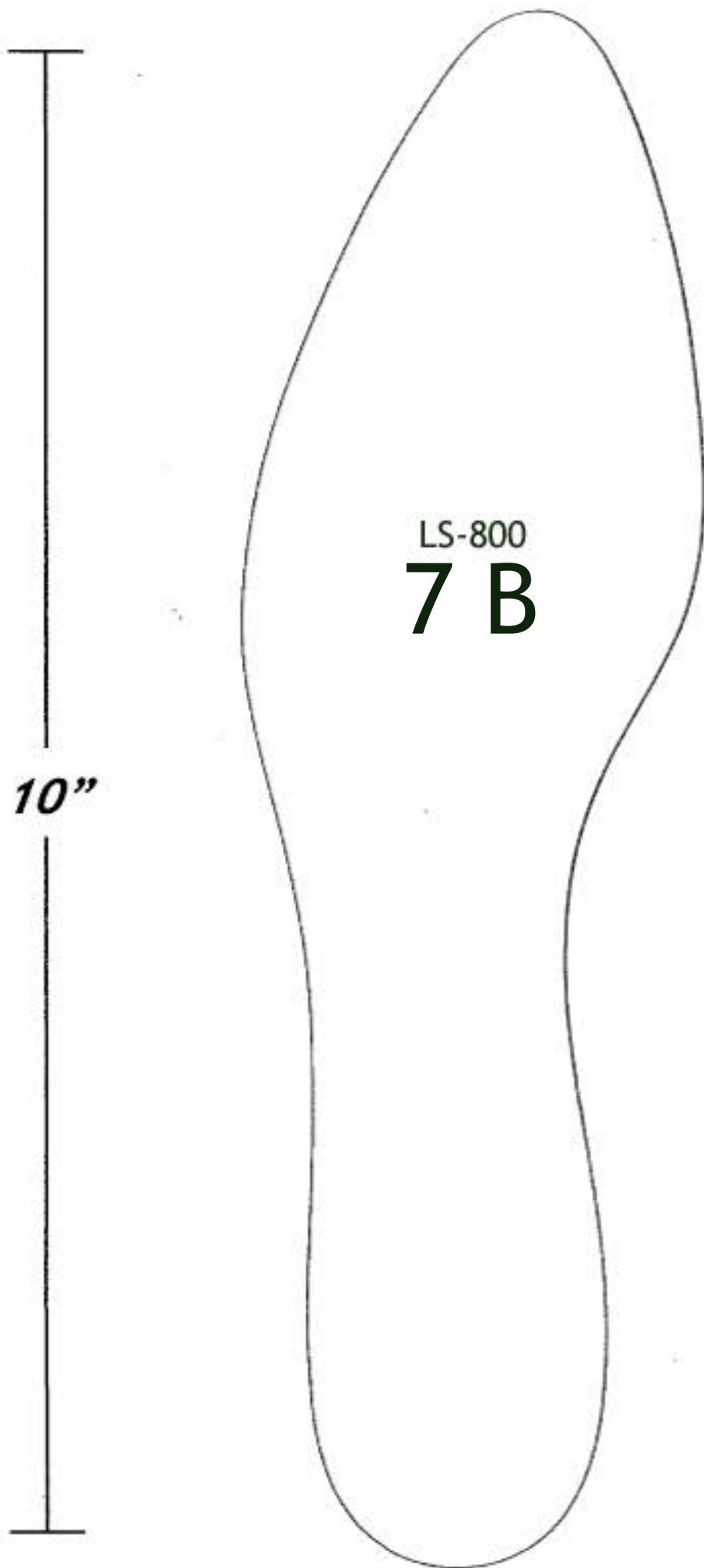
***Ball: 8 1/8"***

***Waist: 7 3/4"***

***H. Instep: 9 1/8"***

Sorrell Notions & Findings  
[www.sorrellnotionsandfindings.com](http://www.sorrellnotionsandfindings.com)  
217 E. Oklahoma Ave.  
Guthrie, OK 73044  
405-282-5464





***Very Important!!***

*Be sure to measure  
the 10" gauge next  
to the last outline  
to verify the proper  
scale. It must be 10"*

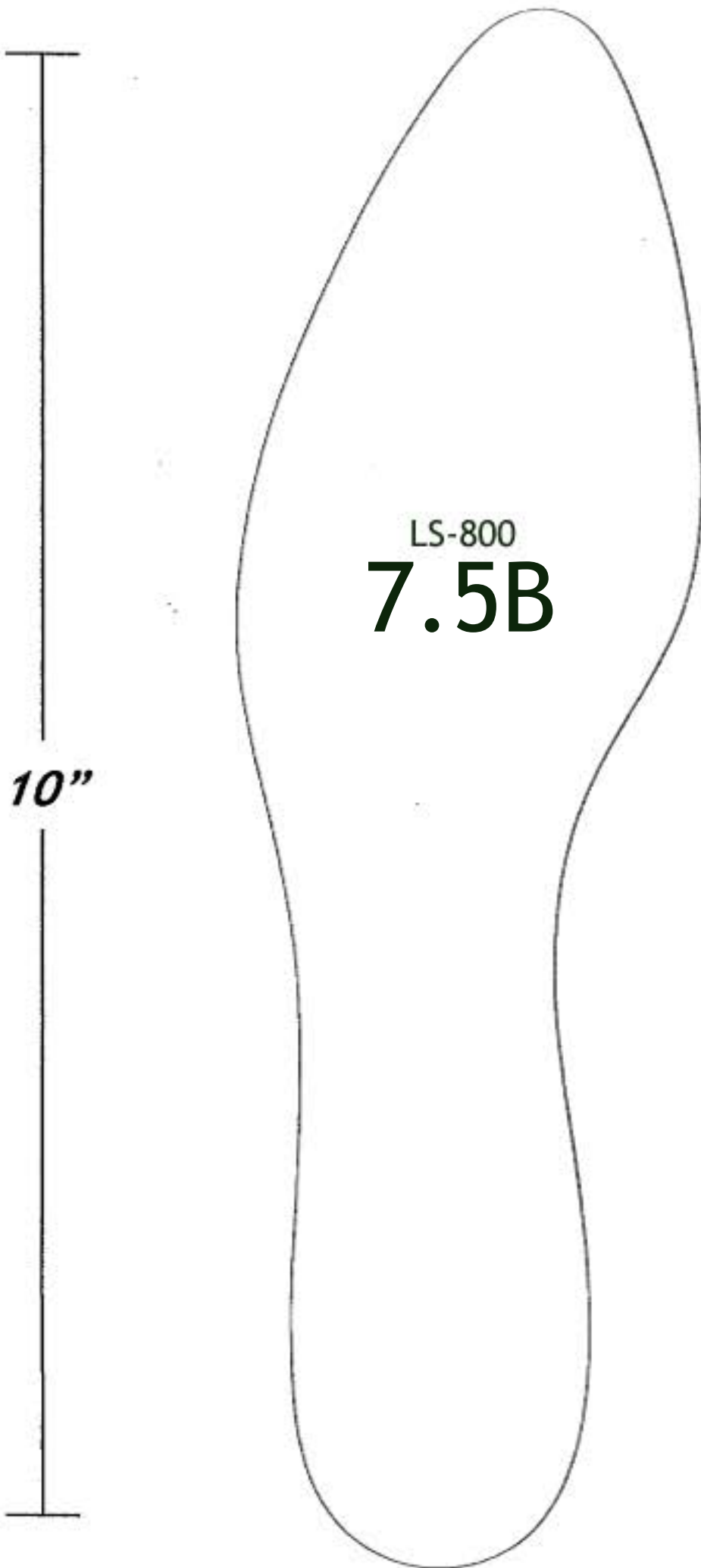
**Volume Measurements**

***Ball: 8 1/4"***

***Waist: 7 7/8"***

***H. Instep: 9 1/4"***

Sorrell Notions & Findings  
[www.sorrellnotionsandfindings.com](http://www.sorrellnotionsandfindings.com)  
217 E. Oklahoma Ave.  
Guthrie, OK 73044  
405-282-5464



***Very Important!!***

*Be sure to measure  
the 10" gauge next  
to the last outline  
to verify the proper  
scale. It must be 10"*

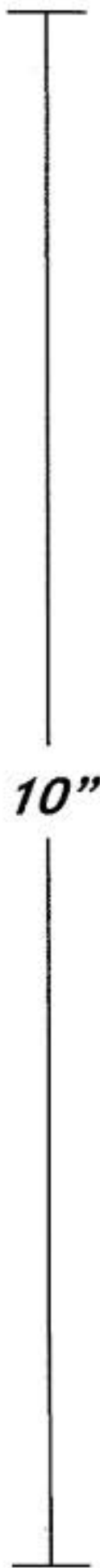
**Volume Measurements**

***Ball: 8 3/8"***

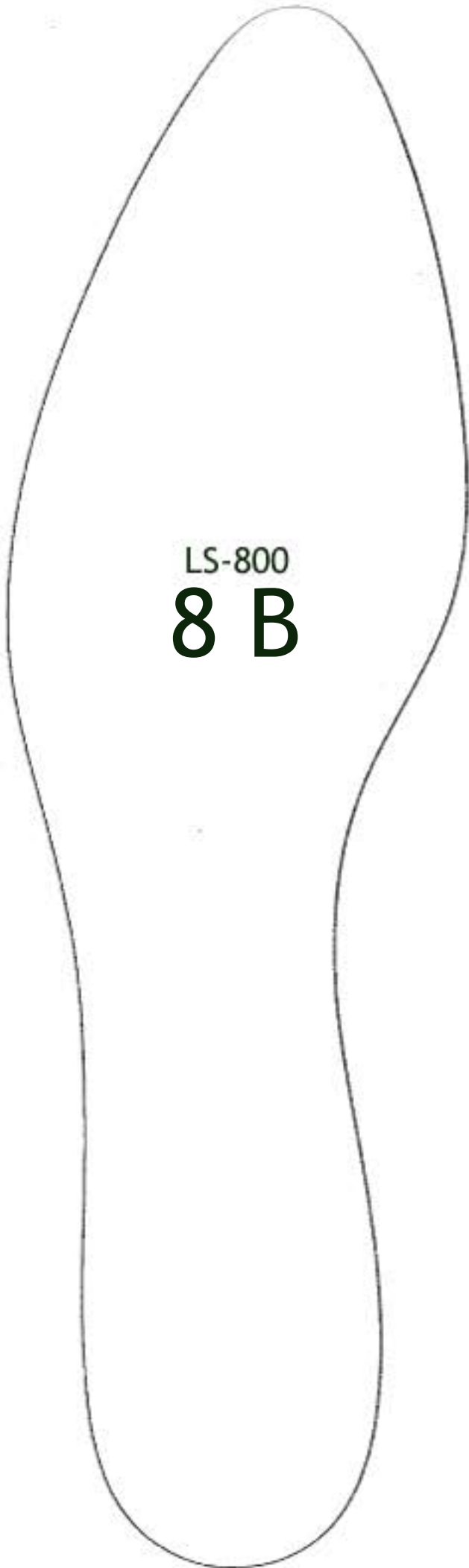
***Waist: 8"***

***H. Instep: 9 3/8"***

Sorrell Notions & Findings  
[www.sorrellnotionsandfindings.com](http://www.sorrellnotionsandfindings.com)  
217 E. Oklahoma Ave.  
Guthrie, OK 73044  
405-282-5464



10"



LS-800  
**8 B**

***Very Important!!***

*Be sure to measure  
the 10" gauge next  
to the last outline  
to verify the proper  
scale. It must be 10"*

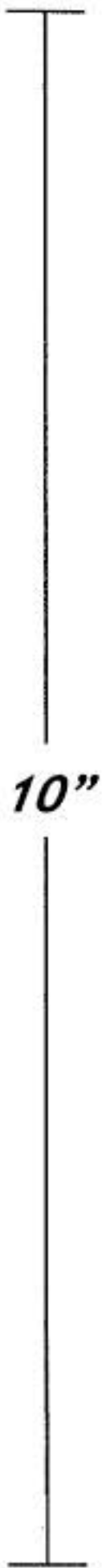
**Volume Measurements**

***Ball: 8 1/2"***

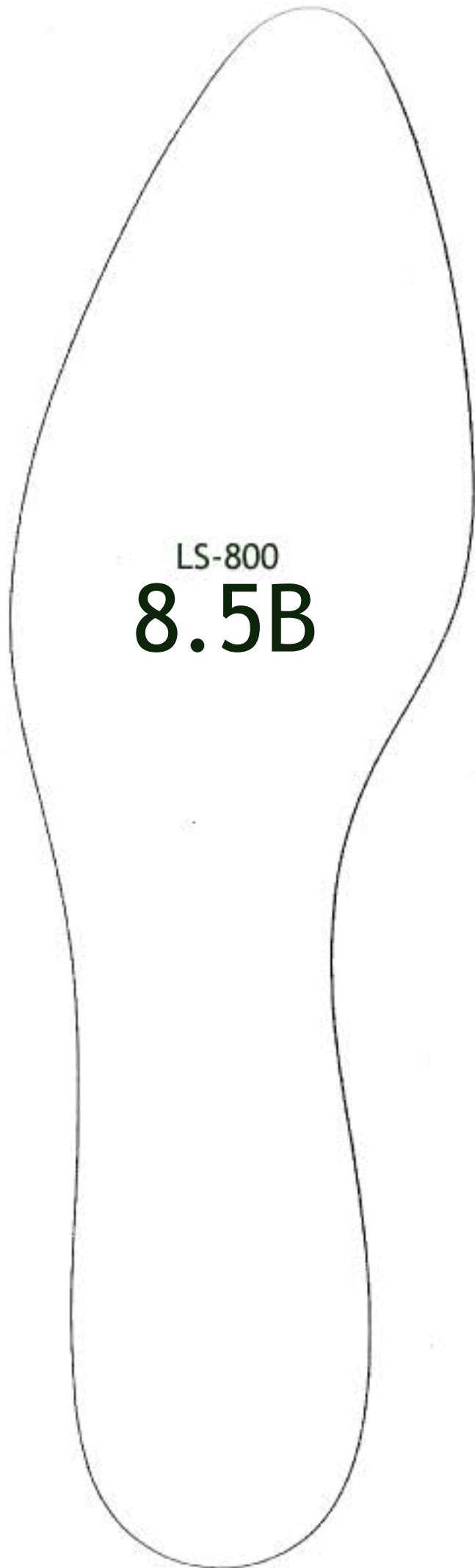
***Waist: 8 1/8"***

***H. Instep: 9 1/2"***

Sorrell Notions & Findings  
[www.sorrellnotionsandfindings.com](http://www.sorrellnotionsandfindings.com)  
217 E. Oklahoma Ave.  
Guthrie, OK 73044  
405-282-5464



10"



LS-800  
**8.5B**

***Very Important!!***

*Be sure to measure  
the 10" gauge next  
to the last outline  
to verify the proper  
scale. It must be 10"*

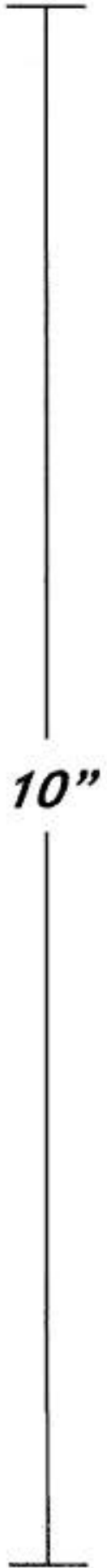
**Volume Measurements**

***Ball: 8 5/8"***

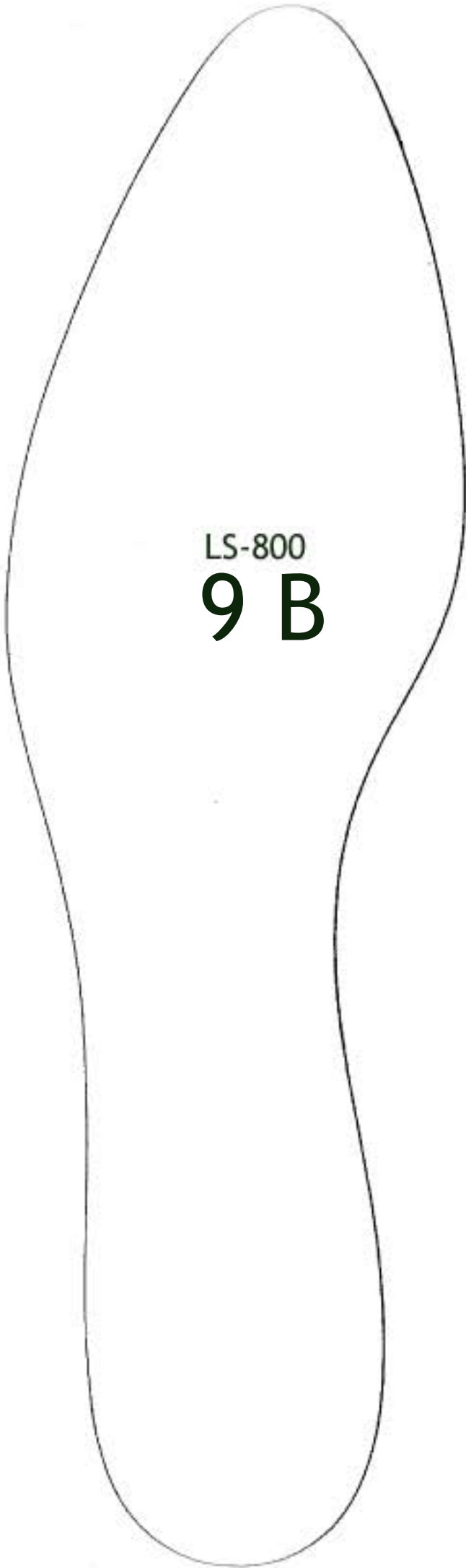
***Waist: 8 1/4"***

***H. Instep: 9 5/8"***

Sorrell Notions & Findings  
[www.sorrellnotionsandfindings.com](http://www.sorrellnotionsandfindings.com)  
217 E. Oklahoma Ave.  
Guthrie, OK 73044  
405-282-5464



10"



LS-800

9 B

***Very Important!!***

*Be sure to measure the 10" gauge next to the last outline to verify the proper scale. It must be 10"*

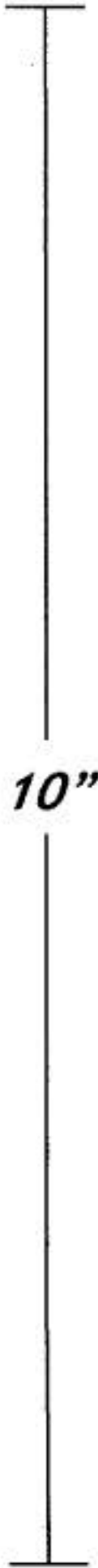
**Volume Measurements**

**Ball: 8 3/4"**

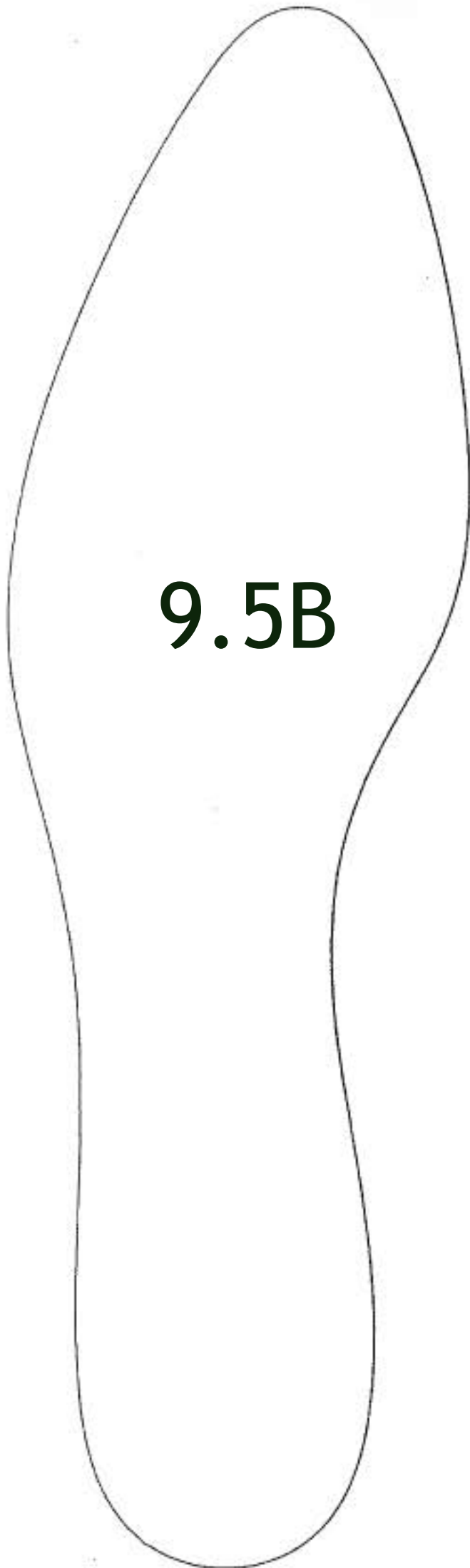
**Waist: 8 3/8"**

**H. Instep: 9 3/4"**

Sorrell Notions & Findings  
www.sorrellnotionsandfindings.com  
217 E. Oklahoma Ave.  
Guthrie, OK 73044  
405-282-5464



10"



9.5B

***Very Important!!***

*Be sure to measure  
the 10" gauge next  
to the last outline  
to verify the proper  
scale. It must be 10"*

**Volume Measurements**

***Ball: 8 7/8"***

***Waist: 8 1/2"***

***H. Instep:***

Sorrell Notions & Findings  
[www.sorrellnotionsandfindings.com](http://www.sorrellnotionsandfindings.com)  
217 E. Oklahoma Ave.  
Guthrie, OK 73044  
405-282-5464